

HUSSMANN®

*Self-Contained Low Temp Merchandisers
with Cassette Design*



*Shown with
customer-provided
graphics*

More Merchandising Space and Less Downtime!

LTH Low Temp Glass Door Merchandisers

The LTH family of low-temperature glass-door merchandisers provides reliable freezer performance, maximum merchandising space and a removable refrigeration cassette for quick, easy service. When placed side-by-side, the LTH models perfectly match Hussmann's medium temp BCH vertical merchandisers, giving your store an attractive, consistent look and feel.

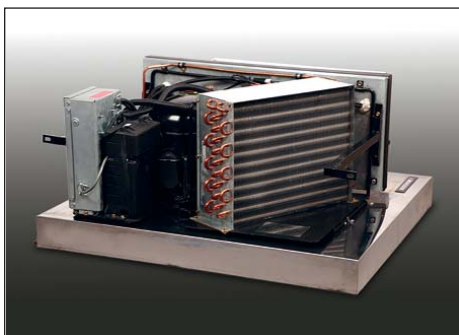
Get More Merchandising Space (You'll Use It)

Because all of the refrigeration components are located in the cassette underneath the case, most of the case interior is available for product display. This gives you more interior space than any competitive unit to merchandise on the adjustable wire racks. Each rack has a built-in 1-1/2" h product stop. The stainless-steel bottom deck is also built to merchandise product.

Innovative Cassette Refrigeration System – A Hussmann Exclusive!

All LTH models feature the new proprietary low temperature cassette refrigeration system that is only available from Hussmann. This revolutionary refrigeration system makes service and maintenance of the freezer quick and easy, minimizing service costs and refrigeration downtime.

The R-404A cassette refrigeration system includes the compressor, condenser, hot gas condensate pan and many of the components usually found inside the freezer display area, such as evaporator, evaporator fan motors, expansion valve and temperature control.



Removable Refrigeration Cassette

Save Your Food (From Defrost) and Save Energy

By removing all of the refrigeration components from the actual display area, the cassette system protects displayed product during defrost better than any other system on the market (since the defrost actually takes place outside of the refrigerated display compartment). Product is not exposed to excessive rise in temperature, and pulling the display compartment back down to operating temperatures is quicker. Displayed product lasts longer and case energy consumption is reduced.

Standard Features/Benefits

- Self-contained system—no plumbing required
- Fans shut off automatically when door is opened, conserving energy and protecting product
- Positive seal self-closing doors
- Convenient switch to turn off all lighting
- State-of-the-art electronic controls
- Energy efficient evaporator fan motors
- Digital temperature display for easy monitoring of interior case temperatures
- Convenient power cord for quick installation and start-up
- Foam-insulated case ends increasing structural integrity and providing a quieter operating case
- Standard 1-1/2" adjustable leveling pods, NSF-approved and shipped installed
- Extruded, welded corners and aluminum door frame
- Adjustable wire shelves
- Left-hand swing door
- Stainless steel bottom shelf, removable for easy cleaning
- The front air intake and discharge design of the cassette unit allows placement of the case up against a wall or another case without having to leave space behind it for exhaust air to escape
- Hermetic compressors for lower noise level and improved efficiency
- Three-pane heated low "E" coated glass doors for the latest in energy efficiency and merchandise viewing
- Standard door locks
- "Buzzer" alarm feature
- Standard frameless exterior lighted sign to maximize your sales message (except on LTH-8S, graphics optional)
- Customer-supplied header graphics installed
- Fluorescent lights with electronic ballasts for brilliant case illumination
- Integrated cabinet light that doesn't take up interior space (clamps can be removed without unloading shelves)
- Matching 1-, 2-, and 3-door BCH medium temperature models, offering side-by-side placement for sales of dairy, deli, and beverages

Options & Accessories

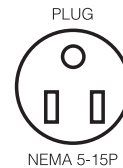
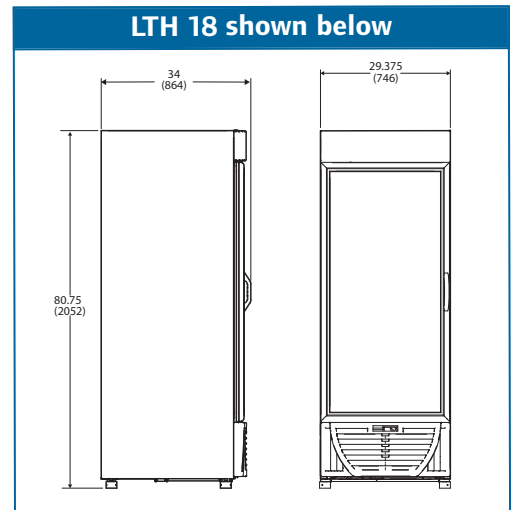
- Black painted exterior
 - Black painted interior
 - LED light kit*
 - Extra wire display racks
 - Price tag molding
 - Display baskets (replace shelf)
 - Shelf dividers
 - Leg kit
 - Caster kit
 - Reversible condenser fan motor
 - Stainless steel cabinet
 - Right-hand door (LTH-8S & LTH-18)
 - No heat door (LTH-8S only)
- *Requires locking plug when LEDs are specified

Specifications

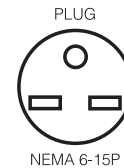
MODEL	WIDTH CENTER SHELF	DEPTH CENTER SHELF	WIDTH LEFT/RIGHT SHELF	DEPTH LEFT/RIGHT SHELF
LTH-8S	19.624"	17.374"	NA	NA
LTH-18	24.1/5"	22 3/8"	NA	NA
LTH-45	NA	NA	25 3/4"	26"
LTH-68	25 3/4"	26"	24"	26"



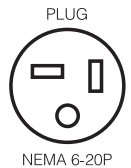
Type II



NEMA 5-15P



NEMA 6-15P



NEMA 6-20P

Model	Doors	Cu. Ft. Cap.	Dimensions							Electrical					NEMA Plug Nos.	Ship Weight	A/C Load (BTU/h)	Energy Consumption (kWh/day)	Energy Consumption (kWh/day)** LED
			Exterior				Interior (Useable)			Unit H.P.	Voltage HZ/PH	Run Amps	Fuse Size	Power Cord					
			L	D*	D End Only	H**	L	D	H										
LTH 8S	1	10.6	24-5/8"	27-5/8"	23-5/8"	60-3/4"	20-5/8"	18-1/8"	40-5/8"	1/2	115/60/1	8.8	15-AMP	Yes	5-15P	310	3760	11.44	10.84
LTH 18	1	22.0	29-3/8"	34"	30"	80-3/4"	25-3/8"	23-1/2"	54"	1	115/60/1	11.5	15-AMP	Yes	5-15P	535	4321	18.459	17.02
LTH 45	2	41.0	52"	34"	30"	80-3/4"	48"	27-1/2"	56"	(2) 1/2	208-230/60/1	11.7	15-AMP	Yes	6-15P	1014	8696	33.74	31.82
LTH 68	3	68.6	78-1/4"	34"	30"	80-3/4"	73-1/4"	26-13/16"	54"	(2) 3/4	208-230/60/1	13.5	20-AMP	Yes	6-20P	1036	13688	51.03	48.73

Note: All LTH cases use R-404A refrigeration *Note: Depth dimension "D" includes 1-1/2" for door handle **Note: Overall height includes 1-1/2" for leveling pods ***Estimated numbers

These merchandisers are designed for use in stores when temperature and humidity do not exceed 80° and 55% RH. Case is designed for holding pre-frozen product only.

We reserve the right to change or revise specifications and product design in connection with any feature of our products. Such changes do not entitle the buyer to corresponding changes, improvements, additions, or replacements for equipment previously sold or shipped.



Ingersoll Rand (NYSE:IR) is a world leader in creating and sustaining safe, comfortable and efficient environments in commercial, residential and industrial markets. Our people and our family of brands — including Club Car®, Hussmann®, Ingersoll Rand®, Schlage®, Thermo King® and Trane® — work together to enhance the quality and comfort of air in homes and buildings, transport and protect food and perishables, secure homes and commercial properties, and increase industrial productivity and efficiency. We are a \$13 billion global business committed to sustainable business practices within our company and for our customers.

ingersollrand.com

Hussmann Corporation
12999 St. Charles Rock Rd.
Bridgeton, MO 63044
Ph: 314-291-2000
Fax: 314-298-4756

www.hussmann.com